



SYNBONE AT A GLANCE

# SYNBONE at a glance



SYNBONE Production Facilities  
Malaysia & Malans (Switzerland)



SYNMAN torso model



Spine model

**For over 25 years, SYNBONE continues to be a global market leader providing the latest in anatomical models to train and educate healthcare professionals.**

SYNBONE produces a wide variety of realistic, artificial anatomical products. Each item reflects the high quality of Swiss design and engineering.

With an annual output of over 300,000 models and a growing client list, SYNBONE announced in 2014 the addition of a second production facility in Malaysia doubling the production capacity.

With the introduction of new products SYNBONE looks forward to further expanding the markets.

The initial product line was designed for the training in Trauma and Orthopedic Surgery: CMF, Neuro, Recon, Trauma, Spine and Veterinary.

Since then, SYNBONE has expanded its product line to include torso models for ATLS, Gastro-Intestinal and Vascular Training.

To meet the customer demands of our customers, SYNBONE offer custom-made models for orthopaedic, skills training, surgical simulation and biomechanical testing.

At SYNBONE, we ensure our models reflect the latest requirements to obtain the best training outcome for surgeons.

Our bone model portfolio may contain fractures, pathological deformations, ligaments and soft tissues.



Bone model with soft tissue



Staying up-to-date is important, but at SYNBONE we are also looking to the future using the newest available 3D design software.

Our product development includes the latest in scanners and prototyping equipment to design and produce custom-made models from CT scan to anatomical teaching models.

At SYNBONE, we pride ourselves on staying current in technology, manufacturing processes and the latest training methods. Because we do, we have a winning reputation among our customers.

Our collaborations with top surgeons, Universities and implant manufacturers around the world are an investment ensuring SYNBONE leads the industry in the development of the highest quality models replicated with the accuracy and attention to detail.

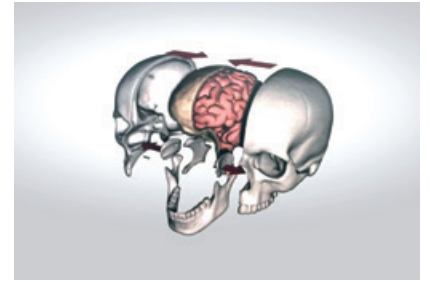
We use polyurethane for our general bone material. This enables us to calibrate formulations for low-medium-hard cortical shell bones. We can vary formulations to replicate cancellous material (for example: long bones in the proximal and distal ends).

Our production methods include 3D printers, soft mold and traditional semi-automated and fully automated equipment using Lean Process Management principles.

We combine our skilled methods with specialized production partners at both SYNBONE locations in Switzerland and Malaysia. These actions keep the quality high and production costs low, resulting in highly competitive product prices for our customers.



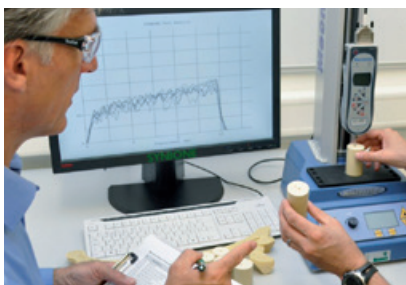
3D Design Engineer



Skull, Brain, Dura



SYNBONE + Customers = Winning combination



Test procedure with new polyurethane material



Skills station

SYNBONE maintains a consistent record of on-time delivery to our global customer base. Over the past few years, our records show a 99.4% on-time delivery record. Additionally we offer specific online tools which help our customers to plan courses and other logistic activities.



Recon knee model



Innovation from SYNBONE: Heinz Hügli explains the concept of the new skull model.

«We work hard to ensure our customers are satisfied with our products and remain long-term partners with SYNBONE.»

## SYNBONE AG in numbers

**Founded** 1988

**Head Office** Malans, Switzerland

**Production Facility** Malans, Switzerland and Johor Bahru, Malaysia, Southeast Asia

**Production Area** 4200 m<sup>2</sup>

**Products** 1000 different products

**Raw Material** 22 ton Polyurethane

**Distribution** Worldwide in 51 countries

**Sales** Over 300'000 products per year

**Customers** Implant manufacturers, hospitals, educational organizations and Universities.

### Information on SYNBONE

SYNBONE continues to grow in the world market. Started in Filisur, Switzerland in 1988, SYNBONE today is manufacturing 1,000 different anatomical models with realistic properties.

Own Research & Development department and production including worldwide distribution in 51 countries.

Our regional sales partners are listed on our web page.

### SYNBONE AG

Neugutstrasse 4 · 7208 Malans, Switzerland  
Phone +41 81 300 02 80 · Fax +41 81 300 02 89  
sales@synbone.com · www.synbone.com

### SYNBONE SDN BHD

No. 40 - 41, Jalan i-Park 1/3 · 81000 Bandar Indahpura · Kulai, Johor, Malaysia  
Phone +60 766 082 20  
sales@synbone.com · www.synbone.com