

Instructions for use SYNMAN Torso Model

Product overview / SYNMAN Torso Model and Accessories



SYNMAN case with attachable wheels for easy transportation



SYNMAN Torso Model for surgery trainings with simulated organs

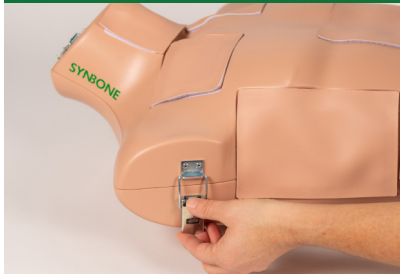


SYNMAN parts available individually or in sets for 8, 16 or 20 participants

SYNMAN Torso Model consists of (1) piece each of below components:

- | | |
|------------------|-----------------------------|
| 1. Cricoid | 8. Pad Cardio |
| 2. Skin Cricoid | 9. Skin Cardio |
| 3. Pad Chest | 10. Pad Abdomen |
| 4. Skin Chest | 11. Skin Abdomen |
| 5. Pad Rib right | 12. Food coloring red |
| 6. Pad Rib left | 13. Food coloring light red |
| 7. Skin Rib | 14. Food coloring yellow |

Preparation of the containers



Open the Torso Model by pressing the center button of the hinge clasps



The pericardial container is equipped with a sponge. Place the container on the holder



Fill the pericardial container with red liquid (water mixed with a few drops of red food coloring)



Place a large piece of Parafilm cover the opening of the filled container (PR0624.20 Parafilm Cover Set)



Pull down the Parafilm cover under the holder and ensure the entire opening is covered and sealed

Preparation of the containers



Fill the peritoneal container with slightly colored liquid (water mixed with a few drops of red food coloring)



Place a piece of Parafilm cover over the opening of the filled peritoneal container and pull it under the holder



Fill the bladder container away from the Torso with yellow liquid (water with a few drops of yellow food coloring)



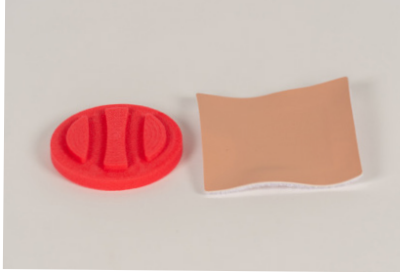
Place a small Parafilm cover over the entire opening and around the sides of the bladder container



Press on both containers to ensure that they are securely attached to the holder

Instructions for use SYNMAN Torso Model

Attach the Pad Chest



Replacement parts:
PR0624.03 Pad Chest
PR0624.04S Skin Chest



The white plate can be opened by removing the black screw



Place the Pad Chest into the opening

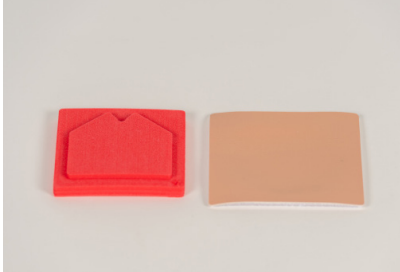


Cover the Pad Chest with the white plate and tighten the black screw

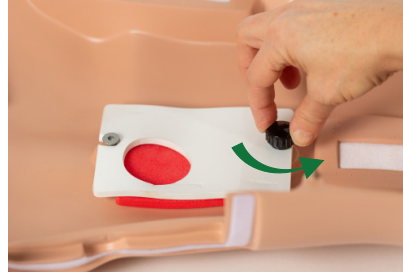


Once the Pad Chest is securely in place, the outer skin can be reapplied

Attach the Pad Cardio



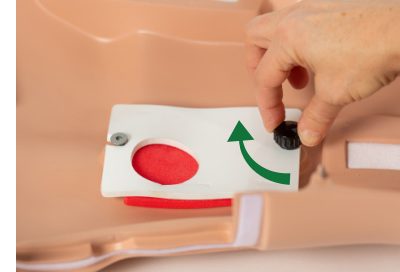
Replacement parts:
PR0624.08 Pad Cardio
PR0624.09S Skin Cardio



The white plate can be opened by removing the black screw



Place the Pad Cardio into the opening



Cover it with the white plate and tighten the black screw

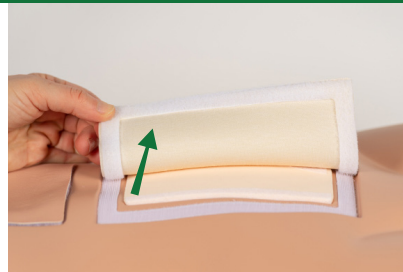


Once the Pad Cardio is securely in place, the outer skin can be reapplied

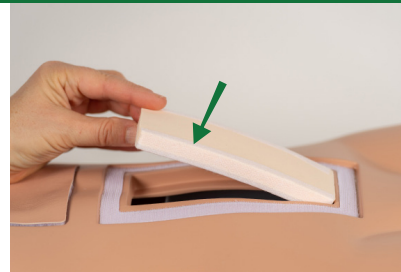
Attach the Pad Abdomen



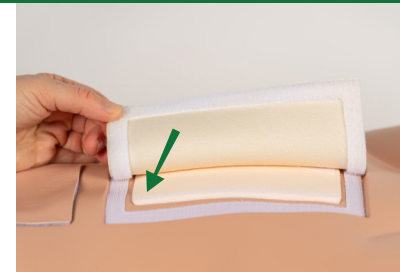
Replacement parts:
PR0624.10 Pad Abdomen
PR0624.11S Skin Abdomen



Remove the outer skin from the abdominal area



Place the Pad Abdomen in place. Make sure the white fabric layer is facing downwards



Reposition the outer skin to the abdominal opening

Instructions for use SYNMAN Torso Model

Insert the cricoid



Replacement parts:
PR0624.01 Cricoid
PR0624.02S Skin Cricoid

Remove the Skin Cricoid

Place the Cricoid into the hole

The Skin Cricoid can be reapplied

Insert the lungs



Replacement parts:
PR0624.12L Lung left
PR0624.12R Lung right

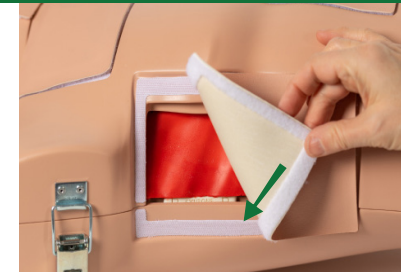
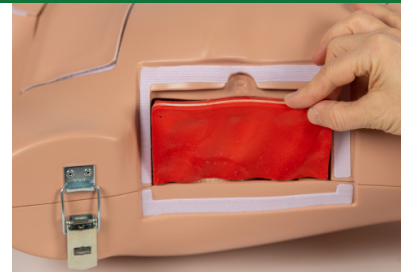
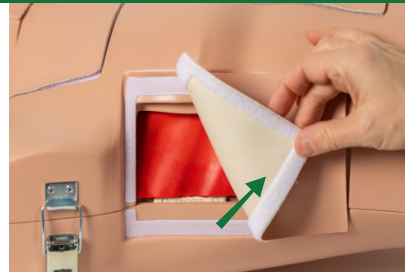
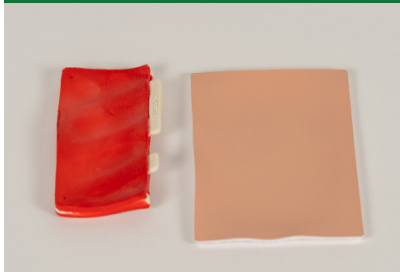
Clean the lung surfaces with a small amount of acetone and sprinkle with PR1236 Talcum Powder

Insert the right lung and tuck it securely in place with a smooth outer surface

Insert the left lung and tuck it securely in place with a smooth outer surface

The top of the Torso Model can be placed on the lower portion and the side hinge clasps can be closed

Insert the Ribs



Replacement parts:
PR0624.05 Pad rib right, PR0624.06 Pad rib left, PR0624.07S Skin rib

Remove the outer skin on both sides of the Torso

Insert the Pad rib right and Pad rib left on both sides (the Pads are marked right and left)

Reapply the outer skin

The SYNMAN Torso Model is now ready for use

Instructions for use SYNMAN Torso Model



Intended use

The **SYNMAN Torso Model** is specially designed for teaching the main principles of the Advanced Trauma Life Support surgical procedures. The SYNMAN Torso Models were designed in cooperation with ATLS Switzerland and are officially acknowledged by ACS/ATLS. For many years, the manikins are being used in acute trauma life support courses throughout the world. The **SYNMAN Torso Model** is not intended to be used in the operation room.

SYNBONE® guarantees best results with the **SYNMAN Torso Model** only by using the **SYNBONE® Accessories for SYNMAN**.

Cleaning and storage

Clean the **SYNMAN Torso Model** with a damp cloth after each use.
Do not use any acidic cleaning products.

To guarantee a long life of the **SYNMAN Torso Model** we recommend a storage in the **PR0624.90 SYNMAN case**.

Accessories

PR0624.90	SYNMAN Case	PR0624.01	SYNMAN Cricoid	PR0624.03	SYNMAN Pad Chest
PR0624.51	SYNMAN Part Set 8	PR0624.02S	SYNMAN Skin Cricoid	PR0624.04S	SYNMAN Skin Chest
PR0624.50	SYNMAN Part Set 16	PR0624.08	SYNMAN Pad Cardio	PR0624.10	SYNMAN Pad Abdomen
PR0624.52	SYNMAN Part Set 20	PR0624.09.S	SYNMAN Skin Cardio	PR0624.11.S	SYNMAN Skin Abdomen
		PR0624.05	SYNMAN Pad Rib right	PR0624.20	SYNMAN Parafilm Covers
		PR0624.06	SYNMAN Pad Rib left	PR0624.22	SYNMAN Colour red
		PR0624.07S	SYNMAN Skin Rib	PR0624.23	SYNMAN Colour light red
		PR0624.12L	SYNMAN Lung left	PR0624.24	SYNMAN Colour yellow
		PR0624.12R	SYNMAN Lung right	PR1236	SYNMAN Talcum Powder

Contact us

SYNBONE AG

Tardisstrasse 199
7205 Zizers · Switzerland
Phone +41 81 300 02 80
sales@synbone.com · www.synbone.com

SYNBONE SDN BHD

No. 40 - 41, Jalan i-Park 1/3
81000 Bandar Indahpura Kulai, Johor · Malaysia
Phone +60 766 082 20
sales@synbone.com · www.synbone.com

